



Tecnológico
de Monterrey

Ruta Azul Applied Research and Innovation Fund

Q&A Info sessions

September 2023

Session rules



Turn off your microphone



Write your question in the
chat

Highlighted points

1

What kind of projects are expected?

2

Who can apply?

3

Which are the Ruta Azul challenges?

4

How to submit your proposal?

5

Checklist of documents to include in the proposal

6

Important dates

7

Budget guidelines

What kind of projects are expected?

Living laboratories for innovation in sustainability and climate change solutions

- The concept of living laboratories refers to a systemic process of concretion in research and innovation in a given territorial context. In these interaction spaces, different actors collaborate to prototype, validate, and test new technologies, services, products, theories of change, and systems in real-life contexts.
- For Ruta Azul, we consider that our facilities and communities function as fertile ground available for proposed solutions to be tested, monitored, and implemented and thus help the institution achieve the goals established in the 2025 Sustainability and Climate Change Plan and solve regional sustainability challenges.

- Research Model Professors from National Schools and Interdisciplinary Institutes can apply as **Principal Investigators** for this call.
 - PIs submitting a proposal to this call (2023) AND leading a proposal for the call (2022) should demonstrate **they have submitted proposals externally** during the last 12 months (external funding is expected).
 - For Discovery Grants, special attention will be given to proposals submitted by Early-Career Researchers (ECRs) as PI.
- Team members may include:
 - Full-time research professors (Research Models: 75%, 50%, 25%)
 - Postdocs
 - PhD students.
 - Experts for specific tasks: Professors from *Tec (Vitalidad Intelectual)* and strategic universities.
 - Research units from the Interdisciplinary Research Institutes can invite professors from school to develop specific tasks/products using their allocated time to do research.
 - Research groups from the National Schools are allowed to invite professors from institutes to develop specific tasks/products using their allocated time to do research.
- Professor Researchers **involvement** in projects (2022) and new projects (2023) should be **less than 100%**
- A key component of the evaluation is the composition of the team, it is highly recommended to include Early-Career Researchers.

Which are the Ruta Azul challenges?

Water Challenge

To reduce our water consumption by 20%

To achieve circular water management in our operations.

Waste Challenge

That 100% of our campuses have a sustainable waste management model.

To prevent 40% of our waste from reaching landfills.

Challenge in sustainable mobility

To reduce our greenhouse gasses emissions by 50%

How to submit your proposal?

<https://scienceconnexion.com/>

Challenge call is now open

Ruta Azul Challenge
Call for Proposals 2023

Call for Proposals 2023 Ruta Azul
RUTA AZUL, THROUGH ITS RESEAR...

Starting date: August 23rd 2023
Closing date: October 20th 2023

Ver Reto

1. Once logged in to the platform, identify the Call for Proposals 2023 Ruta Azul, and select Apply to create your proposal registration.
2. PI can add each team member through the Talent Tank (each member must create an account in Science Connexion previously).
3. The application must include all documents.
4. Science Connexion allows you to work on the proposal development at different time points, when the proposal is ready you must submit it. **Once submitted you won't be able to edit the proposal.**

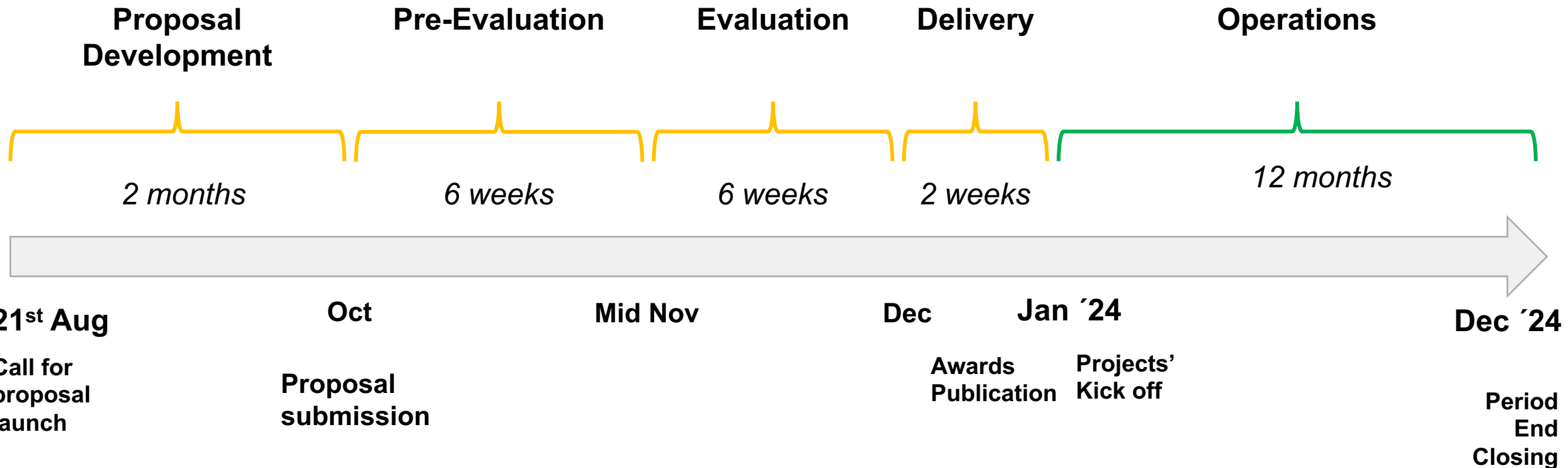
Checklist of documents to include in the proposal

1. Application Form
2. Research Impact Planning Canvas
3. Project Timeline and Milestones Template
4. Budget Template
5. Intelligence report. Universities TOP10 in the areas of the Institute use to propose strategic partners
6. Letter signed by PI and the Regional Sustainability Leader of the corresponding campus in which their proposal would be implemented, that shows a first contact was established between the PI and the campus (see Annex II. Letter template).



Important Dates

August 21, 2023	(+2 months) Up to October 20, 2023	(+6 weeks) Up to December 1, 2023	(+6 weeks) Up to January 12, 2024	(1 week) January 15-19, 2024
Launch	Deadline	Pre-Evaluation	Evaluation	Delivery



Budget guidelines

Modalities 1 and 2

Talent

Postdoctoral positions

Doctoral positions

Technology Development Experts Internal and External

Materials and Experimentation

Internal and External Services

Equipment

Prototypes

Materials and supplies

Research Stays

Short-term Research Stays
Up to 60 days

Publications

Open Access and Conferences
Complying with FAP guidelines

Travel expenses

Research Travels

Travel expenses related to publish articles in conferences

Does not apply for:

- Time to do research ('Descarga')
- Variable compensations
- Scientific or professional associations' memberships
- Working meals, catering and dining events
- Administrative staff salaries and expenses
- Financial resource exchange between universities, only applies for Experimentation services

