



Tecnológico
de Monterrey

Challenge Based Research Funding Program

Q&A Infosessions

August 2023

Session rules



Turn off your microphone



Write your question in the
chat

Highlighted points

1

Calls according to modalities

2

Who can apply?

3

How to submit your proposal?

4

Checklist of documents to include in the proposal

5

Important dates

6

Budget guidelines

Two different Calls

	CALL 1	CALL 2
2 Different Calls	Modality 1. Discovery Grants Modality 2. Exploratory Grants	Modality 3. Traslational / Experimental Research Grants
Duration	Max 3 years	12 months (+ 6 months)
Amount	Discovery Grants: Up to 1 million per year Exploratory Grants: Up to 2 millions per year	Based on the required budget items
Expected Outcomes	Discovery Grants: Research Papers + Research Proposals Exploratory Grants: Discovery Grants Outcomes + Research Contracts	Traslational / Experimental Research Grants: Exploratory Grants Outcomes + Minimum Viable Products (min. TRL7) + Business Elements

- Research Model Professors from National Schools and Interdisciplinary Institutes can apply as **Principal Investigators** for this call.
 - PIs submitting a proposal to this call (2023) AND leading a proposal for the call (2022) should demonstrate **they have submitted proposals externally** during the last 12 months (external funding is expected).
 - For Discovery Grants, special attention will be given to proposals submitted by Early-Career Researchers (ECRs) as PI.
- Team members may include:
 - Full-time research professors (Research Models: 75%, 50%, 25%)
 - Postdocs
 - PhD students.
 - Experts for specific tasks: Professors from *Tec (Vitalidad Intelectual)* and strategic universities.
 - Research units from the Interdisciplinary Research Institutes can invite professors from school to develop specific tasks/products using their allocated time to do research.
 - Research groups from the National Schools are allowed to invite professors from institutes to develop specific tasks/products using their allocated time to do research.
- Professor Researchers **involvement** in projects (2022) and new projects (2023) should be **less than 100%**

How to submit your proposal?

<https://scienceconnexion.com/>

Challenge call is now open

Challenge-Based Research Funding Program

Call for Proposals 2023

Modality 3 Translational Grants

Call for Proposals 2023

Modality 1 Discovery Grants
Modality 2 Exploratory Grants

Call for Proposals 2023
Modality 3

VICEPRESIDENCY OF RESEARCH O...

Starting date: August 24th 2023

Closing date: October 20th 2023

Ver Reto

Call for Proposals 2023
Modalities 1 and 2

VICEPRESIDENCY OF RESEARCH O...

Starting date: August 23rd 2023

Closing date: October 20th 2023

Ver Reto

1. Once logged in to the platform, identify the Challenge-Based Research Funding Program 2023 and select Apply to create your proposal registration.
2. PI can add each team member through the Talent Tank (each member must create an account in Science Connexion previously).
3. The application must include all documents.
4. Science Connexion allows you to work on the proposal development at different time points, when the proposal is ready you must submit it. **Once submitted you won't be able to edit the proposal.**

Checklist of documents to include in the proposal

CALL 1 Modalities 1 and 2

1. Application Form
2. Research Impact Planning Canvas
3. Project Timeline and Milestones Template
4. Budget Template
5. Intelligence report
 - <https://forms.gle/xpSStdEjNS3mdzjG6> (Deadline to requests: **October 6th**)

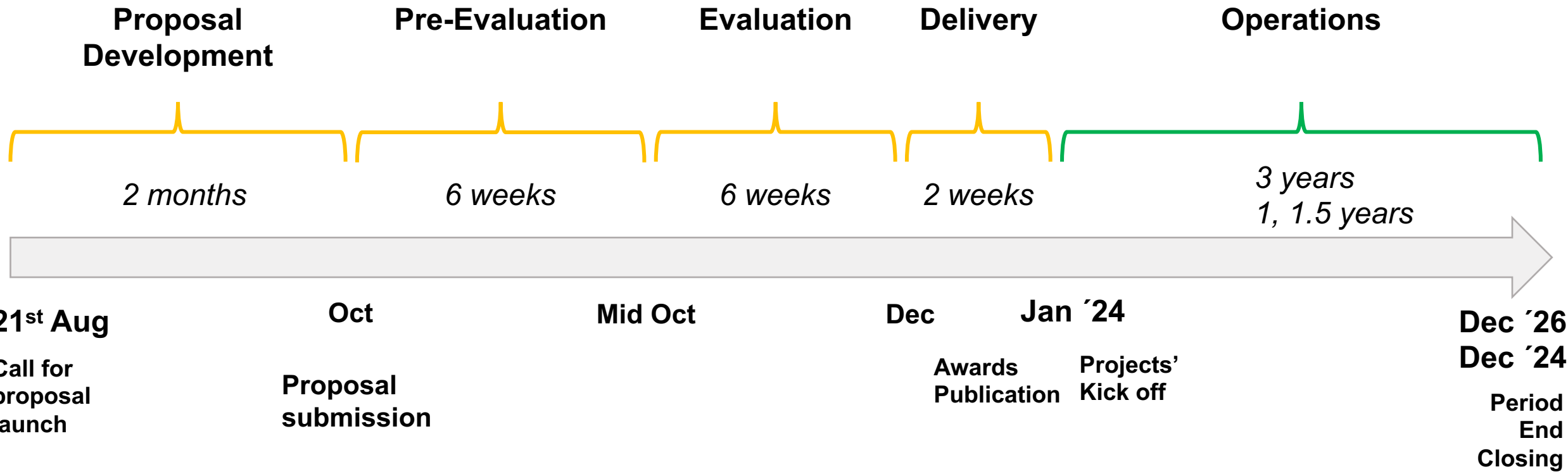
CALL 2 Modality 3

1. Application Form
2. Research Impact Planning Canvas
3. Project Timeline and Milestones Template
4. Budget Template
5. TRL Calculator



Important Dates

August 21, 2023	(+2 months) Up to October 20, 2023	(+6 weeks) Up to December 1, 2023	(+6 weeks) Up to January 12, 2024	(1 week) January 15-19, 2024
Launch	Deadline	Pre-Evaluation	Evaluation	Delivery



Budget guidelines

Modalities 1 and 2

Talent

Postdoctoral positions

Doctoral positions

Technology Development Experts Internal and External

Materials and Experimentation

Internal and External Services

Equipment

Prototypes

Materials and supplies

Research Stays

Long-term Research Stays (Cost of living allowance) Equipment
Between 61 to 180 days

Short-term Research Stays
Up to 60 days

Research Stay Fellowship (Students)

Publications

Open Access and Conferences
Complying with FAP guidelines



Travel expenses

Research Travels

Travel expenses related to publish articles in conferences

Does not apply for:

- Time to do research ('Descarga')
- Variable compensations
- Scientific or professional associations' memberships
- Working meals, catering and dining events
- Administrative staff salaries and expenses
- Financial resource exchange between universities, only applies for Experimentation services

-  Salaries
-  Expenses

Budget guidelines

Modality 3

Specialized services	Subcontracting of national or international scientific and/or technological activities or services that are key for the validation and/or scaling of the solution, prototyping, technical-commercial validation of the product or prototype, field tests, technical data sheets to comply with industrial norms or standards, registrations, certifications, among others, <u>making explicit the scope and objective of the service and the different tasks entrusted with their deliverables.</u>
Technological services	Consists of the contracting of tests, analysis, laboratory tests, stability, safety and efficacy tests, simulations, or developments <u>as long as Tec de Monterrey does not have the capacity to develop them, and they are necessary for the validation and/or compliance with market regulatory requirements necessary for the scaling of the solution. This point must be perfectly validated and justified, where its request and in its case approval, the applicant will commit to demonstrate the result.</u>
Materials and supplies	Includes the cost of acquisition of materials, laboratory and/or field consumables and supplies necessary for the execution of tests and/or validations derived from the needs assessment based on the level of maturity of the technology and the regulatory requirements of the evaluation.

Does not apply for:

- Consultancy fees
- Bonuses of scientific personnel and/work team
- Infrastructure adjustments, equipment
- Dissemination of results
- Administrative expenses
- Software